

TABLE 1 - LUMINAIRE ARM, POLE, SHOE BASE & ANCHOR BOLT DATA

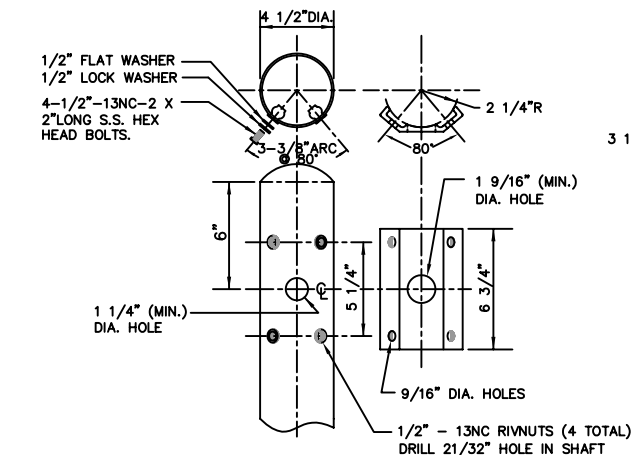
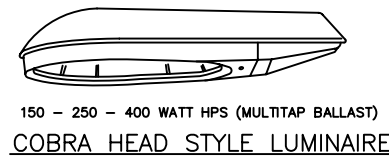
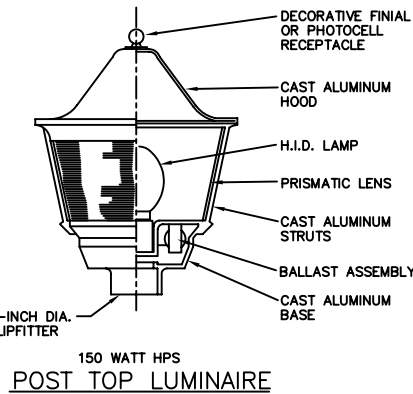
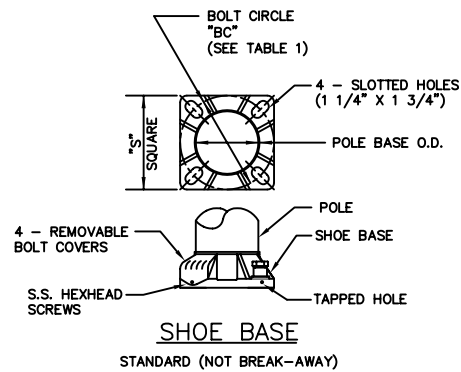
| Designation | Mounting Height (A) | Luminaire Arm(s) | | Type | Pole Shaft | | | | Shoe Base | | Anchor Bolt | | |
|-------------|---------------------|------------------|---------|------|------------|----------|---------------------|------------------|------------|------------------|-------------|--------|------|
| | | Length (B) | Arm 2 | | Base O.D. | Top O.D. | Min. Wall Thickness | Shaft Length (C) | Square (S) | Bolt Circle (BC) | Diameter | Length | Hook |
| | | | | | | | | | | | | | |
| P140 | - | - | - | - | 6" | 3.0" | .0156" | 14'-0" | 9.75" | 9.50" | 0.75"10NC | 25" | 3" |
| P301 | 30 | 6 | - | A | 7" | 4.5" | .0188" | 27'-6" | 10.50" | 11.00" | 1.00" 8NC | 36" | 4" |
| P302 | 30 | 8 | - | A | 7" | 4.5" | 0.188" | 27'-6" | 10.50" | 11.00" | 1.00" 8NC | 36" | 4" |
| P303 | 30 | 10 | - | B | 8" | 6.0" | 0.188" | 26'-8" | 11.25" | 11.00" | 1.00" 8NC | 36" | 4" |
| P304 | 30 | 12 | - | B | 8" | 6.0" | 0.188" | 26'-8" | 11.25" | 11.00" | 1.00" 8NC | 36" | 4" |
| P305 | 30 | 8 | 8 | A | 8" | 6.0" | 0.188" | 27'-6" | 11.25" | 11.00" | 1.00" 8NC | 36" | 4" |
| P306 | 30 | 10 | 10 | B | 8" | 6.0" | 0.219" | 26'-8" | 11.25" | 11.00" | 1.00" 8NC | 36" | 4" |
| P307 | 30 | 12 | 12 | B | 8" | 6.0" | 0.219" | 26'-8" | 11.25" | 11.00" | 1.00" 8NC | 36" | 4" |
| P401 | 40 | 6 | - | A | 8" | 4.5" | 0.219" | 37'-6" | 11.75" | 11.50" | 1.00" 8NC | 36" | 4" |
| P402 | 40 | 8 | - | A | 8" | 4.5" | 0.219" | 37'-6" | 11.75" | 11.50" | 1.00" 8NC | 36" | 4" |
| P403 | 40 | 10 | - | B | 8" | 6.0" | 0.219" | 36'-8" | 11.75" | 11.50" | 1.00" 8NC | 36" | 4" |
| P404 | 40 | 12 | - | B | 8" | 6.0" | 0.219" | 36'-8" | 11.75" | 11.50" | 1.00" 8NC | 36" | 4" |
| P405 | 40 | 15 | - | B | 8" | 6.0" | 0.219" | 36'-8" | 11.75" | 11.50" | 1.00" 8NC | 36" | 4" |
| P406 | 40 | 8 | 8/12/15 | B | 10" | 6.0" | 0.219" | 36'-8" | 14.00" | 14.50" | 1.00" 8NC | 48" | 4" |
| P407 | 40 | 12 | 8/12/15 | B | 10" | 6.0" | 0.219" | 36'-8" | 14.00" | 14.50" | 1.00" 8NC | 48" | 4" |
| P408 | 40 | 15 | 8/12/15 | B | 10" | 6.0" | 0.219" | 36'-8" | 14.00" | 14.50" | 1.00" 8NC | 48" | 4" |

MATERIAL DATA

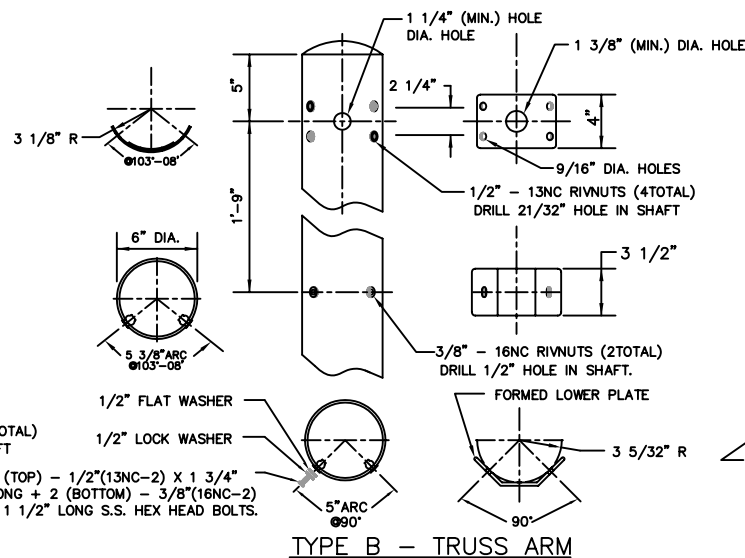
| Component | Aluminum Alloy Designation | Specification |
|---------------------------------------|-----------------------------|---|
| Shoe Base | 356-T6, Cast | ASTM B26 or B108 |
| Breakaway Couplings | 6061-T6, Extruded | 1985 AASHTO |
| Skirt (Breakaway Coupling Assembly) | 3003-H14, Sheet | ASTM B209 |
| Bolt Covers | 356 or 360, Cast | ASTM B26 or B108 |
| Pole Shaft | 6063-T6, Extruded | ASTM B221 or B241 |
| Ground Lug | 6061-T5 or 6063-T6, Plate | ASTM B221 |
| Reinforced Handhole Frame | 356-T6 or 6061-T6 | ASTM B26, B208 or B221 |
| Handhole Cover | 6063-T6 | ASTM B209, B221 or B241 |
| Luminaire Arm & Tubing Pipes * | 6063-T6 | ASTM B221, B241 or B429 |
| Luminaire Arm Plate | 6061-T6 or 6063-T6 Extruded | ASTM B221 |
| Luminaire Arm Strut* & Arm Connector* | 6061-T6 or 6063-T6 Extruded | ASTM B221, B241 or B429 |
| Pole Cap | 356, Cast | ASTM B26 or B108 |
| Anchor Bolts | NA | ASTM A-576 Steel, Galvanized per ASTM A-153 |

*TRUSS-TYPE LUMINAIRE ARMS (TYPE B) ONLY.

- TABLE 1 NOTES:
- ALL POLES, ARMS, AND MISCELLANEOUS EQUIPMENT SHALL CONFORM TO THESE DETAILS AND AS SPECIFIED IN THE LATEST CITY STANDARD SPECIFICATIONS. THE POLES AND ARMS SHALL BE DIMENSIONED TO ENABLE INTERCHANGEABILITY.
 - POLE SHAFT SHALL HAVE A SATIN GROUND FINISH.
 - ALL HARDWARE (BOLTS, NUTS, WASHERS BUT NOT INCLUDING ANCHOR BOLTS) NOT OTHERWISE SPECIFICALLY DESIGNATED IN THE SPECIFICATIONS OR DETAILS SHALL BE ALUMINUM OR 300-SERIES PASSIVATED STAINLESS STEEL.
 - ANCHOR BOLTS SHALL BE STEEL WITH 50,000 PSI MINIMUM YIELD; TOP 10" MIN. GALVANIZED; INCLUDING ONE NUT EACH AND TWO FLAT WASHERS GALVANIZED TO ASTM A-153 STANDARDS. ANCHOR BOLTS SHALL BE USED WITH CONCRETE FOUNDATIONS. GALVANIZED THREADED STUDS (SEE POLE FOUNDATION DETAIL SHEET) SHALL BE USED WITH SCREW-IN FOUNDATION ANCHOR. 4 BOLTS, 4 NUTS, & 8 WASHERS TO BE PROVIDED WITH EACH POLE.
 - ALL WELDING IS TO BE DONE WITH 4043 WELD WIRE. ALL ARMS AND SHAFTS ARE TO BE HEAT-TREATED TO T6 TEMPER AFTER WELDING.
 - THE INTENT OF THESE MATERIAL RESTRICTIONS IS TO PROVIDE INTERCHANGE ABILITY OF BOTH TYPES OF LUMINAIRE ARMS FOR MOUNTING ON EITHER THE 30' OR 40' POLE.
 - ANCHOR BOLTS/THREADED STUDS SHALL PROJECT ABOVE THE FOUNDATION AS PER MANUFACTURER'S RECOMMENDED PRACTICES: 2.5" TO 3".
 - UNLESS OTHERWISE NOTED, ALL MAST ARMS SHALL BE TYPE A, SINGLE MEMBER ARM.
 - THE ALUMINUM LIGHTING STANDARD INCLUDING ANCHORAGE AND LUMINAIRE SHALL COMPLY WITH THE LATEST CITY STANDARD SPECIFICATIONS AND THE ASSOCIATION OF HIGHWAY OFFICIALS (AASHTO) LOAD WIND LOADING.



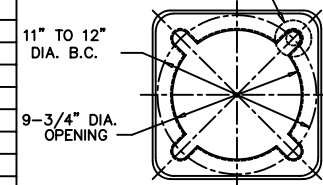
TYPE A - SINGLE MEMBER ARM



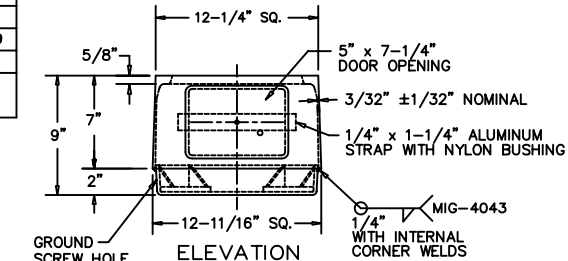
TYPE B - TRUSS ARM

30' (or 40) POLE ELEVATION (SEE TABLE 1 FOR DESIGNATIONS & DIMENSIONS)

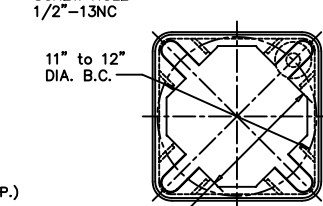
USE 2-3/4\"/>



TOP VIEW

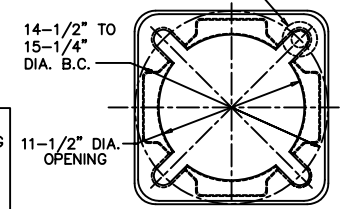


ELEVATION

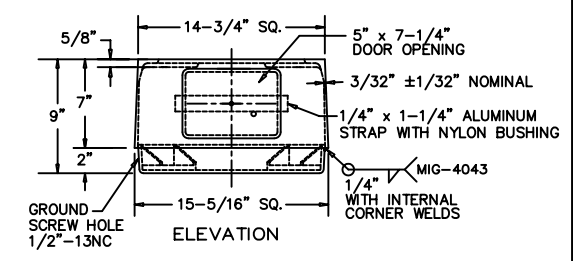


11\"/>

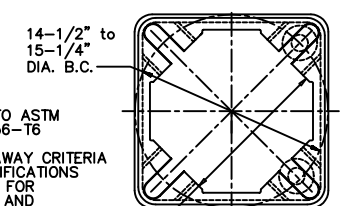
USE 2-3/4\"/>



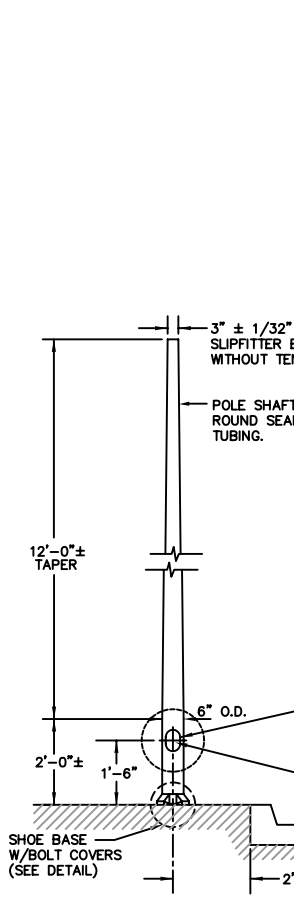
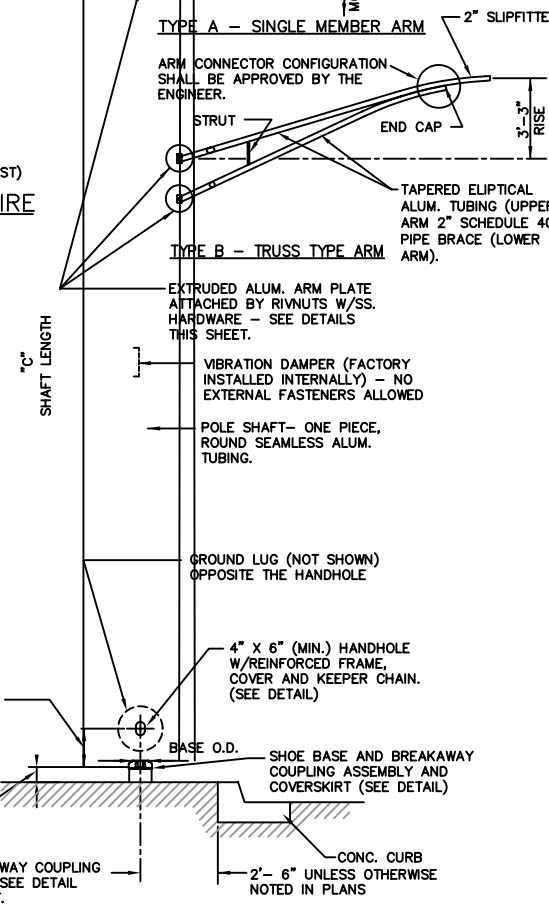
TOP VIEW



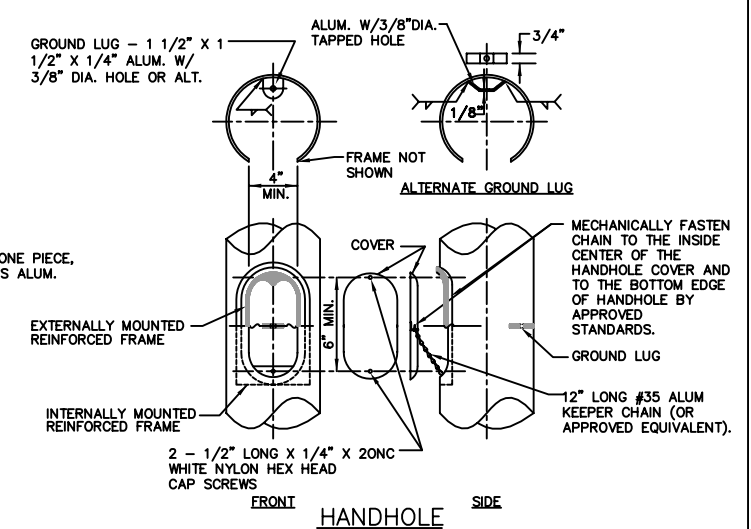
ELEVATION



15\"/>



14' POLE ELEVATION (NOT BREAK-AWAY)



HANDHOLE

| | | | |
|--|-------------------------------|----------------|-----------|
| 5/09/2003 | BREAKAWAY BASE DETAIL CHANGED | SC | MS |
| DATE | REVISION | BY | APPR |
| STREET LIGHTING INSTALLATION | | | |
| POLE AND ARM, LUMINAIRE, BREAKAWAY COUPLING DETAIL | | | |
| PROJECT | | | |
| PUBLIC WORKS - ENGINEERING | | | |
| PROJ. NO. | XX-XXXX | SLDETAIL03.DWG | 02 JAN 02 |
| DATE | XX-XX-XXXX | DETAIL 3 of 4 | |
| DESIGNED | XXX | | |
| DESIGN CK | XXX | | |
| DETAILED | XXX | | |
| DETAIL CK | XXX | | |
| SHEET X OF XX | | | |

